

## SPECIFICATIONS

### ENGINE

Model .....MHI S4KT  
 Type .....4-cycle water-cooled, direct injection  
 Aspiration .....Turbocharged  
 No. of cylinders..... 4  
 Rated power  
 ISO 9249, net ..... 95PS (69.9kW) at 1950 min<sup>-1</sup> (rpm)  
 SAE J1349, net ..... 95PS (69.9kW) at 1950 min<sup>-1</sup> (rpm)  
 Maximum torque ..... 372 Nm (37.9 kgfm) at 1 400 min<sup>-1</sup> (rpm)  
 Piston displacement..... 4.249 L  
 Bore and stroke ..... 102 mm x 130 mm  
 Batteries .....2 x 12V / 80AH

### HYDRAULIC SYSTEM

#### Hydraulic Pumps

Main pumps .....2 variable displacement axial piston pumps  
 Maximum oil flow ....2 x 105 L/min  
 Pilot pump.....1 gear pump  
 Maximum oil flow .....30.24 L/min

#### Hydraulic Motors

Travel .....2 variable displacement axial piston motors  
 Swing .....1 axial piston motor

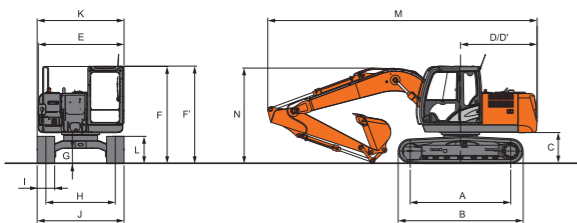
#### Relief Valve Settings

Implement circuit .....34.3 MPa (350 kgf/cm<sup>2</sup>)  
 Swing circuit .....32.3 MPa (330 kgf/cm<sup>2</sup>)  
 Travel circuit .....34.3 MPa (350 kgf/cm<sup>2</sup>)  
 Pilot circuit .....4.0 MPa (41 kgf/cm<sup>2</sup>)  
 Power boost .....36.3 MPa (370 kgf/cm<sup>2</sup>)

### BACKHOE ATTACHMENTS

Capacity	Width		No. Of teeth	Weight	Recommendation	
	Without side cutters	With side cutters			2.10 m arm	3.01 m arm
0.7 m <sup>3</sup> (GP)	1066 mm	1186 mm	5	508 kg	✓	
0.6 m <sup>3</sup> (HD)	931 mm	—	4	574kg	✓	
0.45 m <sup>3</sup>	802 mm	—	4	475 kg		✓

### DIMENSIONS



Unit: mm

A Distance between tumblers	2 880	I Track shoe width	500
B Undercarriage length	3 580	J Undercarriage width	2 490
* C Counterweight clearance	865	K Overall width	2 490
D Rear-end swing radius	2 190	* L Track height with triple grouser shoes	790
D' Rear-end length	2 190	M Overall length	
E Overall width of upperstructure	2 431	With 2.10 m arm	7 658
F Overall height of cab	2 718	With 3.01 m arm	7 710
F' Overall height of upperstructure	2 718	N Overall height of boom	
* G Min. ground clearance	440	With 2.10 m arm	2 579
H Track gauge	1 990	With 3.01 m arm	2 680

\* Excluding track shoe lug G: Triple grouser shoe

The Specifications are subject to change without prior notice. The Machine depicted may vary from the actual Machine Please contact our nearest office for latest specifications. Accessories shown here are not part of the standard equipment Performance of the machine may vary with site and operating conditions encountered

#### Tata Hitachi Construction Machinery Company Private Limited

Registered Office : Jubilee Building 45 Museum Road Bangalore 560 025 India  
 Telephone : +91 80 66953301 02 03 04 05 Fax : +91 80 66953309/25325792  
 E-mail : info@tatahitachi.co.in Website : www.tatahitachi.co.in

Toll Free Number : 1800 121 6633

### UPPER STRUCTURE

Swing speed ..... 13.7 min<sup>-1</sup> (rpm)

### UNDER CARRIAGE

#### Tracks

Heat-treated connecting pins with dirt seals Hydraulic (grease) track adjusters with shock-absorbing recoil springs.

#### Numbers of Rollers and Shoes on Each Side

Upper roller .....1  
 Lower rollers .....7  
 Track shoes .....44  
 Track guard .....1

#### Travel Device

Each track driven by 2-speed axial piston motor  
 Parking brake is spring-set/hydraulic-released disc type.  
 Automatic transmission system: High-Low.

Travel speeds .....High : 0 to 55 km/h  
 Low : 0 to 3.4 km/h

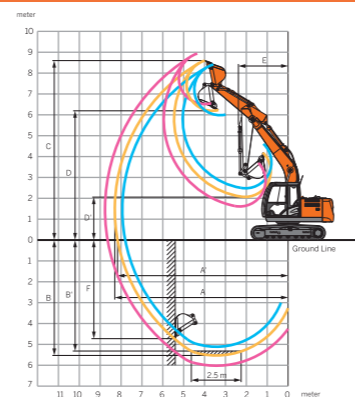
Maximum traction force ... 102 kN (10400 kgf)

Gradeability .....70% (35 degree) continuous

### SERVICE REFILL CAPACITIES

Fuel tank .....2500 L  
 Engine coolant.....190 L  
 Engine oil .....18.5 L  
 Swing device .....3.2 L  
 Travel device (each side) .....4.0 L  
 Hydraulic system .....1700 L  
 Hydraulic oil tank.....690 L

### WORKING RANGES



Unit: mm

Arm length	2.10 m	3.01 m
A Max. digging reach	7 900	8 740
A' Max. digging reach (on ground)	7 770	8 620
B Max. digging depth	5 150	6 060
B' Max. digging depth for 2.5 m level	4 910	5 870
C Max. cutting height	8 370	8 900
D Max. dumping height	5 960	6 490
D' Min. dumping height	2 487	1 607
E Min. swing radius	2 310	2 590
F Max. vertical wall digging depth	4 650	5 500



TATA HITACHI

Reliable solutions

# UNBEATABLE PERFORMANCE

## GI Series



with  
ConSite

ZAXIS 140H

95PS @ 1950rpm | 13360 kg | 0.45 - 0.7 m<sup>3</sup>





### More Production with Less Fuel

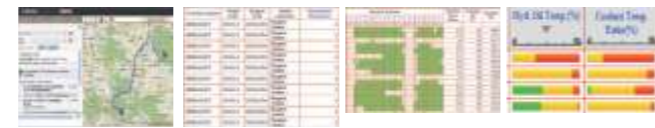
The new ZAXIS 140H is a fuel-thrifty excavator that can produce more with an improved fuel efficiency of around 16%, thanks to the HIOS III hydraulic system and engine control system. Further the machine offers:

- More Fuel reduction in ECO mode
- Swift front movements with HIOS III hydraulics
- Rapid Arm Roll-in
- Fast Arm Speed During Boom Lowering
- Enhanced Power boost
- Powerful lifting operation



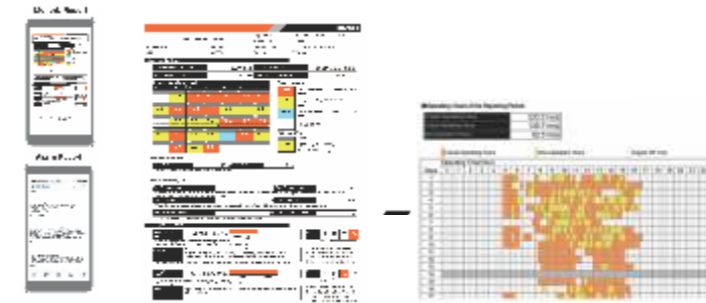
### Remote Fleet Management with Global e-Service

Global e-Service provides easy access to a machine on site, conveying operating information and log, including machine location, daily operating hours, fuel level, temperatures, pressures and likes.



### Monitor your machines closely with ConSite

ConSite is a consolidated solution service that links you to your machines on the construction site.



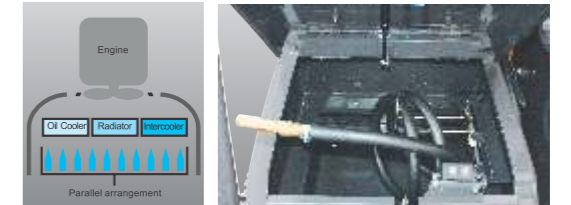
### Operator Seat - Designed for Comfort

The cabin offers exceptional comfort and confidence, with plenty of leg space and excellent visibility. The new compact console gives more leg space. The new door pillar is shifted rearward by 70 mm to widen entry space for easy access into the cabin.

The control panel and control levers are arranged within easy reach of the operator. AM/ FM radio with 2 speakers are available for reducing work stress. All these designs focus on enhancing operator comfort and reducing his fatigue level.



Multifunction monitor    Ergonomic controls    Rear Air-conditioner vents



Parallel arrangement of ROC    Electric Fuel Refilling Pump

### Simplified Maintenance

Parallel arrangement of ROC, Dustproof indoor net, Grouped remote inspection points, Sloped side frame tops, Long service intervals & Electric fuel filling pump(optional) helps to simplify maintenance



### Durable, Reliable Engine

The Japanese engine used in this machine is known for its durability and reliability. The rugged design, fuel efficient engine has a direct fuel injection system and a mechanical governor.

It is a green engine complying with the EU Stage II and US EPA Tier 2 emission regulations.

The turbocharged engine generates a whopping 95PS (69.9 kW) of output for higher production in a shorter job schedule.



### Rock-Solid, Durable Front Attachment

The robust boom and arm are designed and analysed using advanced software. They are manufactured to precision using high grade steels with state of the art welding robot and machining centres. Thus, durability is built into the front attachment. Arm cylinder and boom cylinders (rod extend ends) cushion shocks at stroke ends to cut noise and extend service life.

Joint pins at the front attachment are tightly fit to reduce jolt and sound. The arm-bucket joint is protected by WC thermal spraying on its contact surfaces to reduce wear and jolt. New type steel bushings, retain grease inside for longer greasing intervals. A reinforced resin thrust plate, provided at front attachment joints, helps reduce wearing noise.



**ZAXIS**

*Now, with the Power of GI*



### Strengthened Undercarriage

The X-beam frame is made monolithically with fewer welds for higher rigidity and durability. Idler brackets and travel motor brackets are both thickened for added durability.