



**TATA HITACHI**

Reliable solutions

# SHINRAI

● RELIABLE ● TRUSTWORTHY ● CAPABLE



Model  
**SHINRAI-BX80**

Operating Weight  
**7,800 kg**

Bucket Capacity  
**Backhoe: 0.26 m<sup>3</sup>**  
**Loader: 1.1 m<sup>3</sup>**

**THE NEW  
REVOLUTION IN  
BACKHOE LOADERS**

## RELIABLE DRIVE LINE FOR RELIABLE PERFORMANCE

- Superior engine performance
- Reliable transmission and axle system
- In-line fuel injection pump for easy maintenance



Engine



Fuel Injection Pump



Axle & Transmission



# SHINRAI

• RELIABLE • TRUSTWORTHY • CAPABLE



## BE IN SYNC WITH SHINRAI

- GPS- and GPRS-based remote tracking through InSite
- Monitors machine location and operations
- Offers information about the machine and the fleet

**inSite**  
INSIGHTS INTO YOUR JOB SITE



BE IN SYNC WITH  
YOUR MACHINE



Location,  
Geo Fencing



Fuel Levels



Asset Utilization



Fleet Management



Ability to track Machine  
Maintenance/Service  
due date



Overall Fleet Summary  
in Graphical Widgets  
(Dashboard)

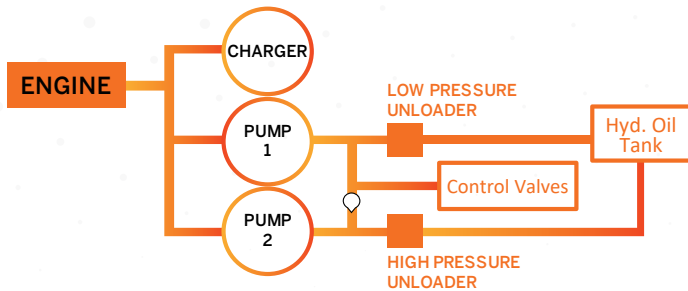


Asset Operation

## INSITE HELPS YOU WITH

## EXCELLENT HYDRAULIC SYSTEM

- Provides great performance with fuel efficiency
- High/Low pressure unloader systems ensure passage of hydraulic oil, when needed
- Ensures optimal utilisation of engine and hydraulic power



Reliable Pump and Control Valve

## A CABIN THAT OFFERS MAXIMUM COMFORT AND SAFETY

- Maximum comfort, safety and noise reduction
- Meets ROPS\*/FOPS\* safety requirements
- Offers air-conditioning\*, ergonomic controls
- User-friendly consoles and ample storage space



Spacious Cabin

## ULTIMATE SUPPORT FOR THE ULTIMATE MACHINE



- Warranty and post-warranty services
- On-site services through a wide network of dealerships
- Field diagnostic vehicle for immediate on-site resolution
- On-site and plant-based training programmes



Field Diagnostic Vehicle



Ground-level Inspection



## LOADER BUCKET OPTIONS

**Standard Loader Bucket 1.1 m<sup>3</sup>:** Loader bucket is used for standard operations like loading and dozing applications.

**6-in-1 Loader Bucket:** Multi-purpose loader bucket is used for applications like loading, dozing, leveling, grabbing, spreading and backfilling. This is useful in construction sites for performing various applications.



## REAR TYRES



**General Purpose Tyres:** Recommended for soft soil strata applications. Provides better grip and helps maneuvering machine in slushy soil strata.



**Heavy Duty Tyres:** Recommended for hard soil strata applications. Has additional ply rating to withstand hard soil conditions like crusher site.

## BACKHOE BUCKET OPTIONS



**Standard Backhoe bucket 0.26 m<sup>3</sup>:** It is recommended for soil applications and optimally designed for loading with high bucket fill ratio ensuring more load in each bucket pass.

**Heavy Duty bucket 0.22 m<sup>3</sup>:** It is used in applications like crushing where material handled is predominantly stone chips or the likes.

**Trench Buckets, 1 ft and 1.5 ft width:** Used exclusively for pipe-laying and trench applications. Currently offering two varieties of buckets based on the width of the trench. The 1 feet bucket is used for optical fiber cable laying operations and the 1.5 feet bucket is preferred for water pipe and electrical line applications.



**Ditch Cleaning Bucket:** This bucket comes with perforated holes in the bucket which helps in draining water from the load taken in the bucket. It is of great use in solid waste handling.

**Ripper Tooth:** Used for pulling a block of rock or concrete.

## ATTACHMENTS



### Rock Breaker:

Due to exponential growth in construction sector of both Urban & Rural India, this attachment is used extensively for demolition applications and breaking small to medium sized stones. The Tata Hitachi B60 Super Breaker coupled with SHINRAI BX80 Backhoe Loader offers superior performance & increased efficiency.

**Auger:** Used for drilling/pole erection/plantation/fencing/casing applications. The Tata Hitachi 8000MAX offers high power torque which can dig up to 6 M deep and 1200 MM diameter hole.



**Quick Coupler:** The Tata Hitachi Quick Coupler allows fast changeover of bucket & multiple attachments, thereby achieving increased productivity due to reduced changeover time and labor.

All dimensions are in mm





## **Tata Hitachi Construction Machinery Company Private Limited**

Registered Office: Jubilee Building, 45 Museum Road, Bangalore, India 560025

Telephone: +91 80 6695 3301 / 02 / 03 / 04 / 05 | Toll Free : 1800 121 6633

Email: [info@tatahitachi.co.in](mailto:info@tatahitachi.co.in) | Website: [www.tatahitachi.co.in](http://www.tatahitachi.co.in) | [f](#) [t](#) [in](#) [@](#) [v](#)

Authorised Dealership

These specifications are subject to change without prior notice. The machine depicted may vary from the actual machine. Please contact our nearest office for latest specifications. Accessories shown here are not part of the standard equipment. Performance of the machine may vary with site and operating conditions encountered.